

The Studio



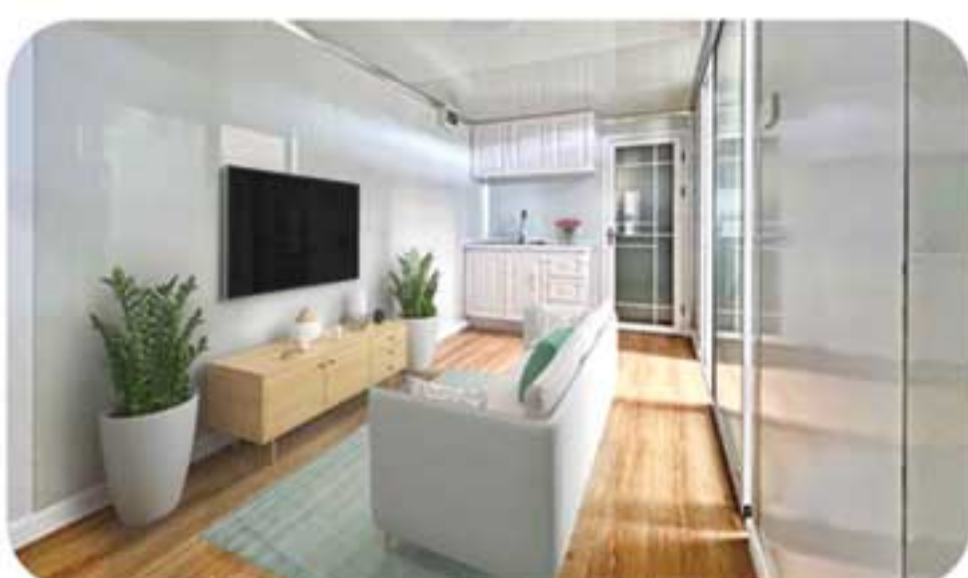
Affordable: A fraction of the price of traditional building methods. **Fast:** Timeframes that will really put a smile on your dial - weeks not months. **Tiny:** Importantly, where it matters - well over half of Tiny Home owners happily live mortgage free.

Manufactured with simplicity and affordability in mind. Coming in at 13.5 sqm, The Studio is designed as a quick and easy solution to adding a home office, man cave, or an affordable weekender. Add a deck and awning and double the living size.

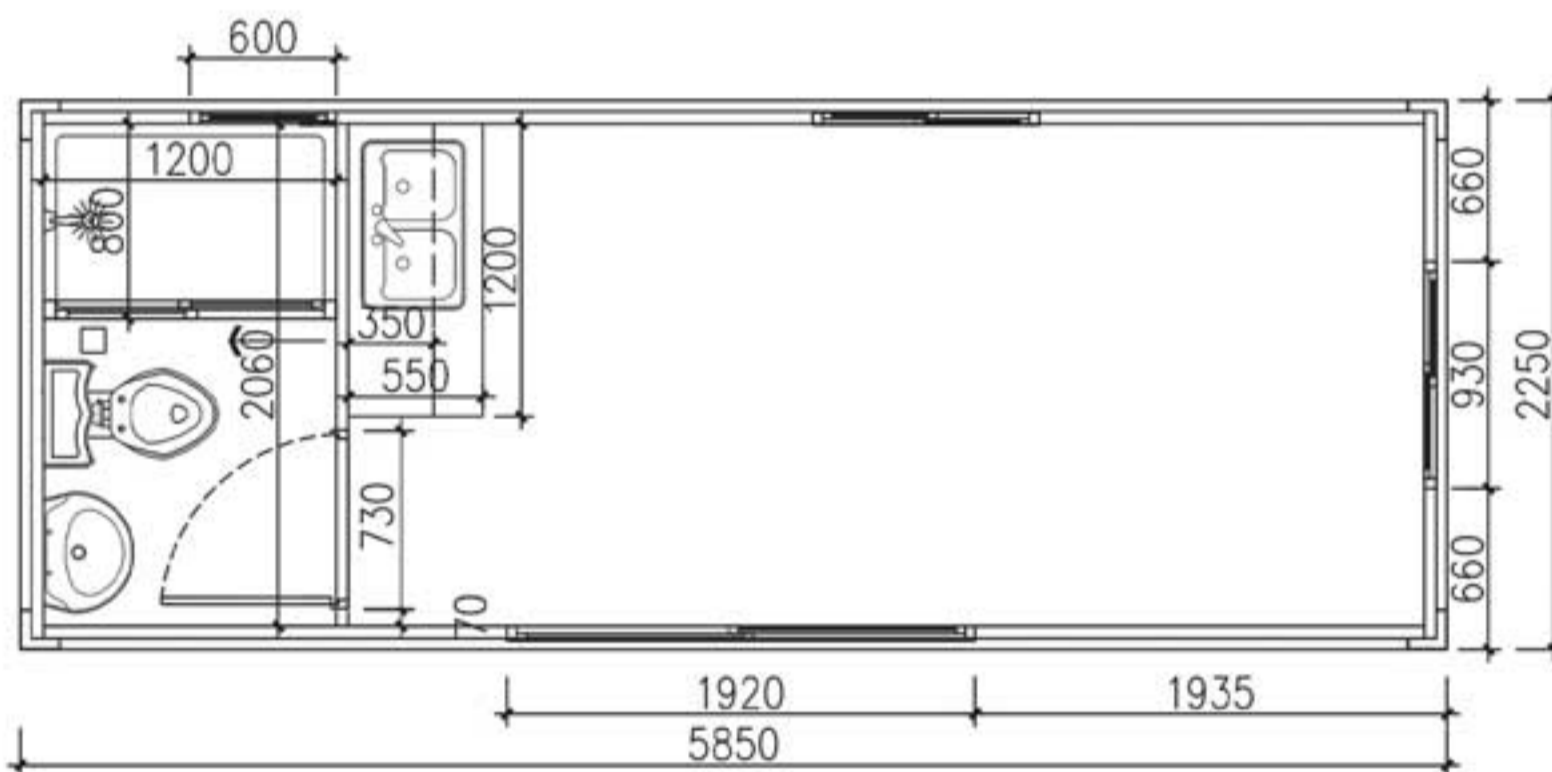
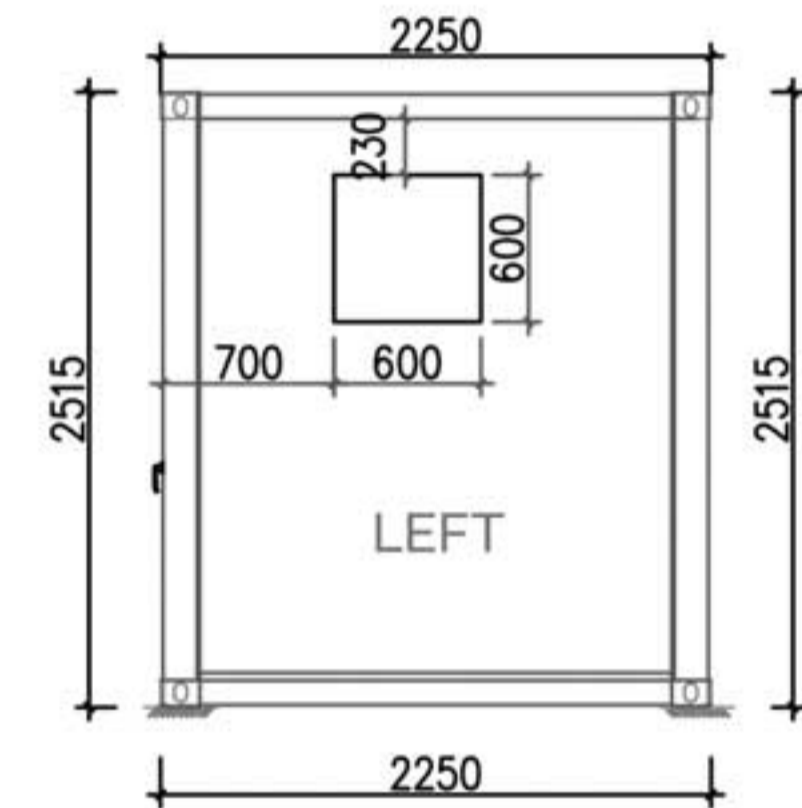
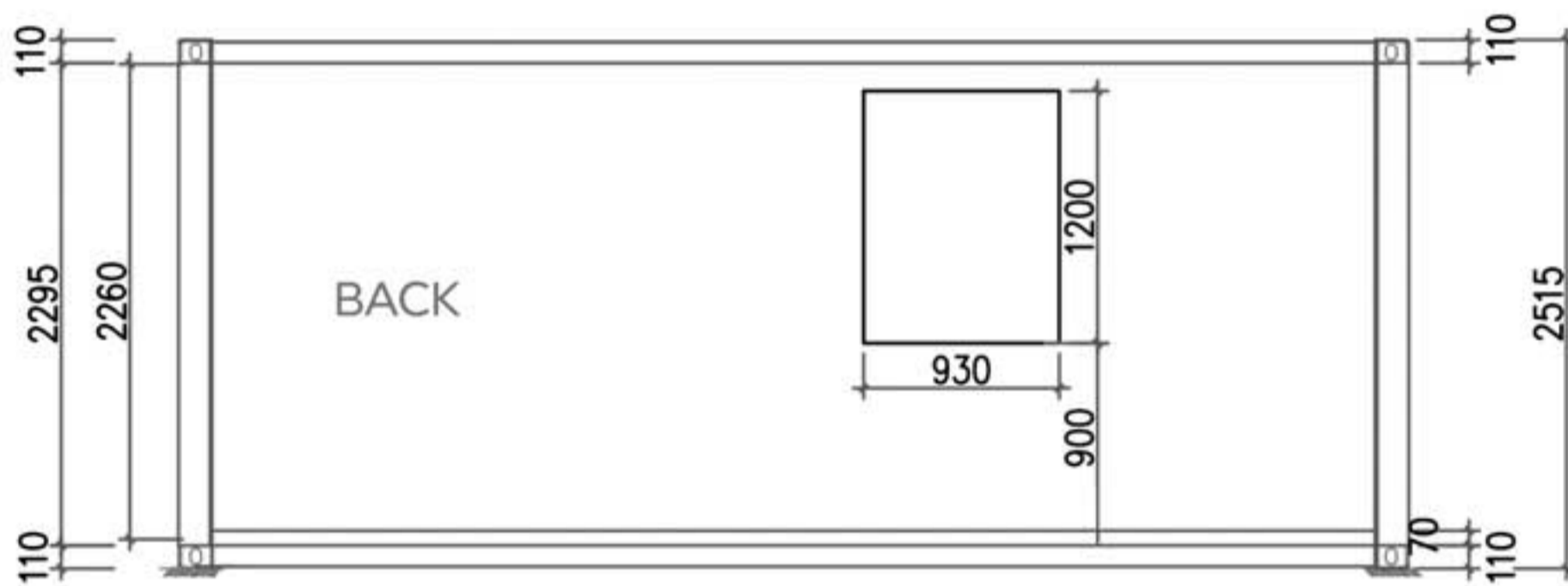
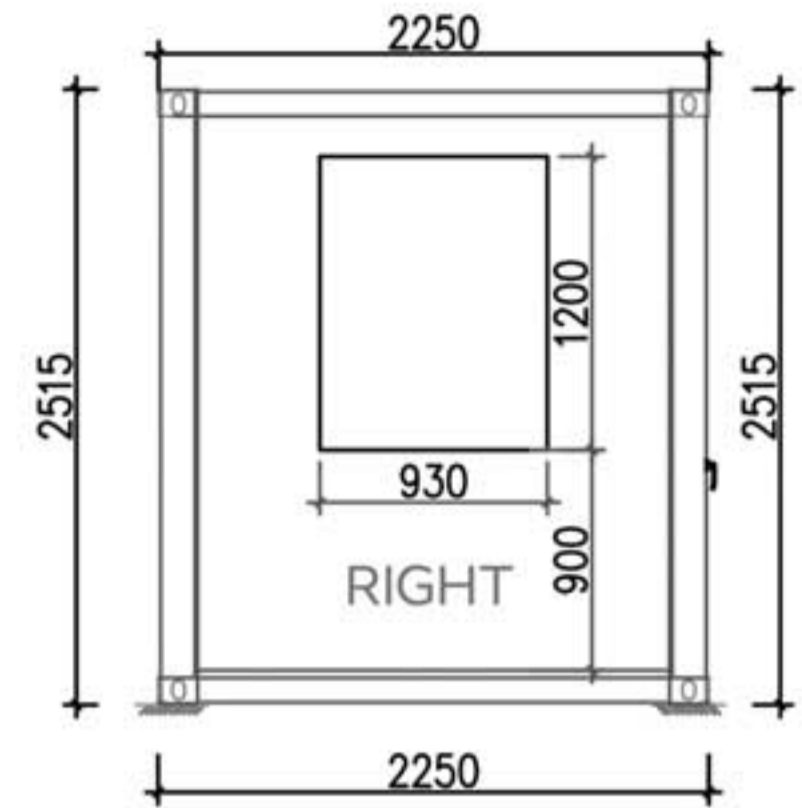
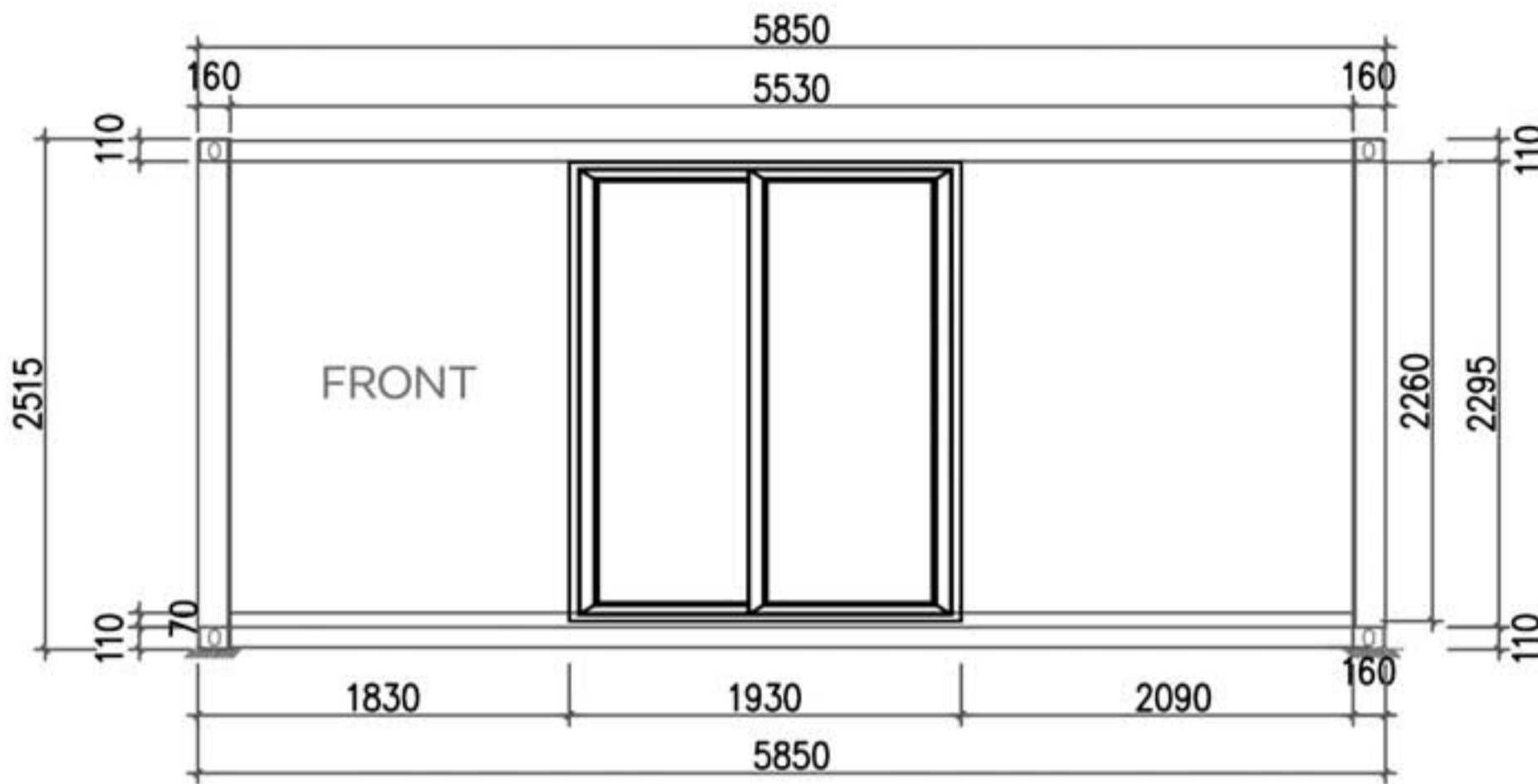


Standard features include:

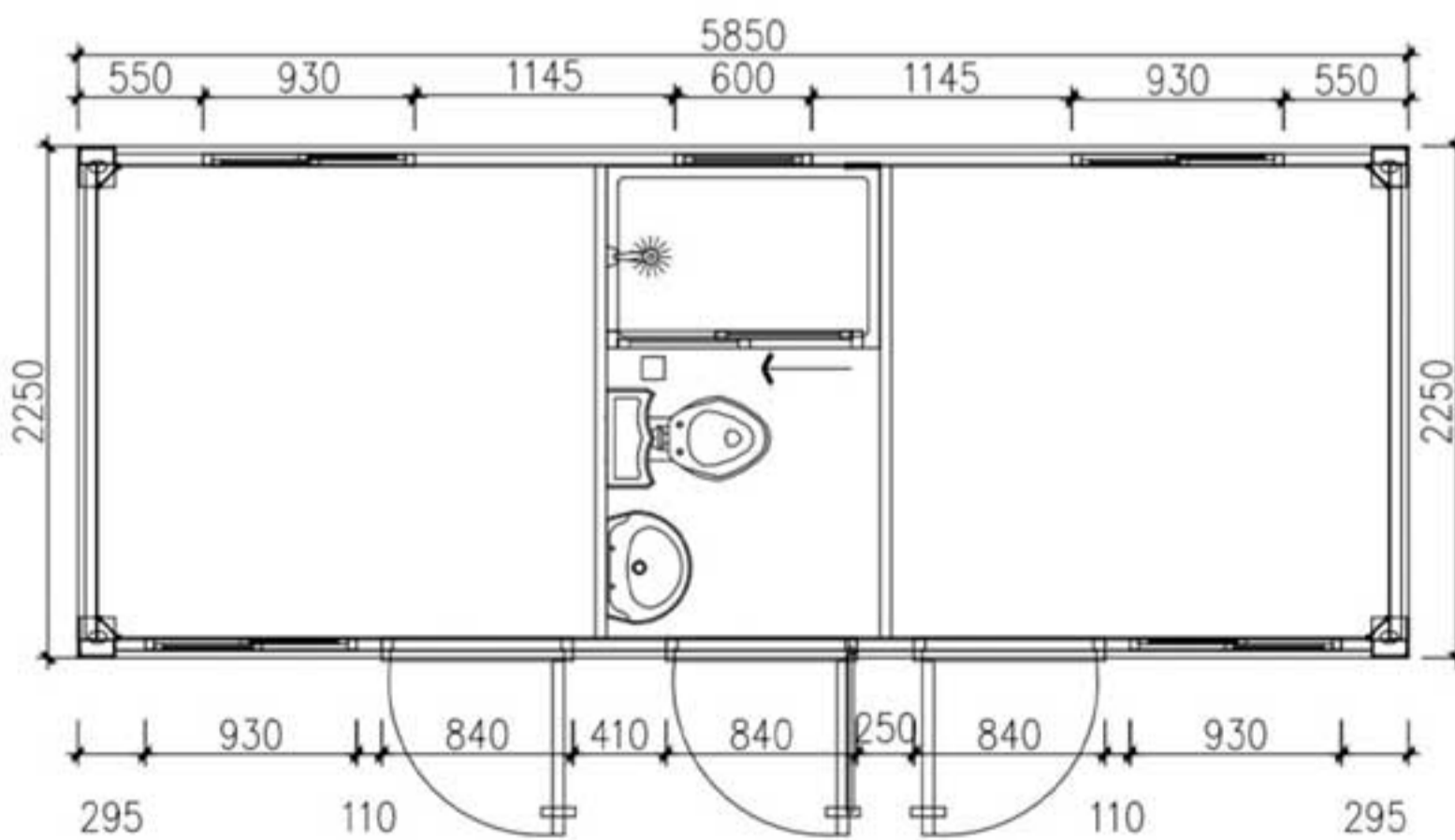
- Easy set up/installation
- Plug and Play - move in the same day your cabin is delivered
- 50mm cool room panelling ~ walls and roof
- 3mm steel plate on roof
- Constructed from a 3mm gal steel frame
- Aluminium window and Sliding Door frames
- Fully plumbed in bathroom and kitchenette
- Flip mixers in shower, vanity and kitchenette
- Soft closing kitchen cabinets
- Quartz stone kitchen bench top
- Rail/rain maker shower head
- Soft close toilet lid
- Power connected by 15 amp lead



The Studio



One Room



Two Room



Proudly Australian owned and operated with display villages nation-wide.